

## Non-Catalog Model

# Frequency Mixer

# SBL-1H+

Level 17 (LO Power + 17 dBm)

### Important Note

This is a non-catalog model and can be manufactured on specific request. Pricing and delivery information can be supplied upon request.



Please click "Back", and then click "Contact Us" for Applications support.

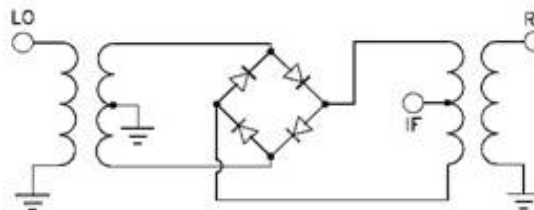
**CASE STYLE : A06**

ELECTRICAL SPECIFICATIONS 50Ω @ +25°C					
Parameter		Min.	Typ.	Max.	Units
Frequency	LO (f <sub>L</sub> to f <sub>u</sub> )	1		500	MHz
	RF (f <sub>L</sub> to f <sub>u</sub> )	1		500	MHz
	IF	DC		500	MHz
Conversion Loss	mid band		5.6	7.0	dB
	Total Range		6.2	7.5	dB
LO-RF Isolation	Low Range	50	60		dB
	Mid Range	40	50		dB
	Upper Range	30	45		dB
LO-IF Isolation	Low Range	50	60		dB
	Mid Range	30	41		dB
	Upper Range	20	38		dB

**Note:** Low Range = [f<sub>L</sub> to 10f<sub>L</sub>]      Mid Range = [10f<sub>L</sub> to f<sub>u</sub>/2]      Upper Range = [f<sub>u</sub>/2 to f<sub>u</sub>]  
 mid band = [2f<sub>L</sub> to f<sub>u</sub>/2]

MAXIMUM RATINGS	
Operating Temperature	-55°C to +100°C
Storage Temperature	-55°C to +100°C

### Electrical Schematics



PIN CONNECTIONS	
LO	8
RF	1
IF	3 & 4
GROUND	2,5,6,7



P.O. Box 350166, Brooklyn, New York 11235-0003 (718) 934-4500 Fax (718) 332-4661 For detailed performance specs & shopping online see Mini-Circuits web site



The Design Engineers Search Engine Provides ACTUAL Data Instantly From MINI-CIRCUITS At: [www.minicircuits.com](http://www.minicircuits.com)

RF/IF MICROWAVE COMPONENTS

REV. X1  
 SBL-1H+  
 2/14/2007  
 Page 1 of 1